

# Timbuktu

Description

[Maps](#)

[Documents](#)

[Gallery](#)

[Video](#)

[Indicators](#)

[Assistance](#)

## Timbuktu

Home of the prestigious Koranic Sankore University and other *madrasas*, Timbuktu was an

intellectual and spiritual capital and a centre for the propagation of Islam throughout Africa in the 15th and 16th centuries. Its three great mosques, Djingareyber, Sankore and Sidi Yahia, recall Timbuktu's golden age. Although continuously restored, these monuments are today under threat from desertification.

Description is available under license [CC-BY-SA IGO 3.0](#)

English

French

Arabic

Chinese

Russian

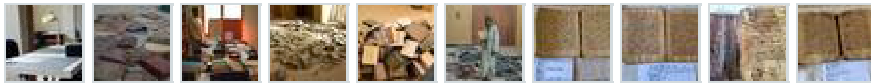
Spanish

Japanese

Dutch



Timbuktu (Mali) © UNESCO



## Outstanding Universal Value

### Brief synthesis

Located at the gateway to the Sahara desert, within the confines of the fertile zone of the Sudan and in an exceptionally propitious site near to the river, Timbuktu is one of the cities of Africa whose name is the most heavily charged with history.

Founded in the 5th century, the economic and cultural apogee of Timbuktu came about during the 15th and 16th centuries. It was an important centre for the diffusion of Islamic culture with

the University of Sankore, with 180 Koranic schools and 25,000 students. It was also a crossroads and an important market place where the trading of manuscripts was negotiated, and salt from Teghaza in the north, gold was sold, and cattle and grain from the south.

The Djingareyber Mosque, the initial construction of which dates back to Sultan Kankan Moussa, returning from a pilgrimage to Mecca, was rebuilt and enlarged between 1570 and 1583 by the Imam Al Aqib, the Qadi of Timbuktu, who added all the southern part and the wall surrounding the cemetery located to the west. The central minaret dominates the city and is one of the most visible landmarks of the urban landscape of Timbuktu.

Built in the 14th century, the Sankore Mosque was, like the Djingareyber Mosque, restored by the Imam Al Aqib between 1578 and 1582. He had the sanctuary demolished and rebuilt according to the dimensions of the Kaaba of the Mecca.

The Sidi Yahia Mosque, to the south of the Sankore Mosque, was built around 1400 by the marabout Sheik El Moktar Hamalla in anticipation of a holy man who appeared forty years later in the person of Cherif Sidi Yahia, who was then chosen as Imam. The mosque was restored in 1577-1578 by the Imam Al Aqib.

The three big Mosques of Djingareyber, Sankore and Sidi Yahia, sixteen mausoleums and holy public places, still bear witness to this prestigious past. The mosques are exceptional examples of earthen architecture and of traditional maintenance techniques, which continue to the present time.

**Criterion (ii):** The mosques and holy places of Timbuktu have played an essential role in the spread of Islam in Africa at an early period.

**Criterion (iv):** The three great mosques of Timbuktu, restored by the Qadi Al Aqib in the 16th century, bear witness to the golden age of the intellectual and spiritual capital at the end of the Askia dynasty.

**Criterion (v):** The three mosques and mausoleums are outstanding witnesses to the urban establishment of Timbuktu, its important role of commercial, spiritual and cultural centre on the southern trans-Saharan trading route, and its traditional characteristic construction techniques. Their environment has now become very vulnerable under the impact of irreversible change.

### **Integrity**

The three mosques and the sixteen mausoleums comprising the property are a cliché of the former great city of Timbuktu that, in the 16th century, numbered 100,000 inhabitants. The vestiges of urban fabric are essential for their context. However, as indicated at the time of inscription of the property, rampant urbanization which is rife in Timbuktu, as in Djenne, is particularly threatening to the architecture, and the large public squares and markets. Contemporary structures have made irretrievable breaches in the original parcelling and obviously exceed the scale of the traditional buildings. This process is ongoing and most recently a new very large institute was built on one of the public squares, compromising the integrity of the Sankore Mosque. Urban development pressures, associated with the lack of

maintenance and flooding, resulting from the heavy rains, threaten the coherence and integrity of the urban fabric and its relation to the property.

The three mosques are stable but the mausoleums require maintenance, as they are fragile and vulnerable in the face of irreversible changes in the climate and urban fabric.

### **Authenticity**

The three mosques retain their value in architectural terms, traditional construction techniques associated to present-day maintenance, and their use. However, the Sankore Mosque has lost a part of the public square that was associated with it following the construction of the new Ahmed Baba Centre. Following this construction, the status of the mosque in the urban context and part of its signification have been compromised and require review and reconsideration.

Overall, because of the threat from the fundamental changes to the traditional architecture and the vestiges of the old city, the mosques and mausoleums risk losing their capacity to dominate their environment and to stand as witnesses to the once prestigious past of Timbuktu.

### **Protection and management requirements**

The site of Timbuktu has three fundamental management tools: a Revitalization and Safeguarding Plan of the Old Town (2005), and a Strategic Sanitary Plan (2005), that are being implemented despite certain difficulties; and a Conservation and Management Plan (2006-2010) is being implemented and which shall be reassessed shortly.

The management system of the property is globally appropriate as its legal protection is jointly assured by the community of Timbuktu through management committees of the mosques, the cultural Mission of Timbuktu and the Management and Conservation Committee of the Old Town of Timbuktu. This mechanism is strengthened by two practical functioning modalities, initiated in consultation with the World Heritage Centre: the Town Planning Regulation and the Conservation Manual. The specific long-term objectives are the extension of the buffer zone by approximately 500 m to assure the protection of the inscribed property ; the development of the historic square of Sankore to integrate corrective measures proposed by the Committee at its 33rd session and by the reactive monitoring mission of March 2010 ; the extension of the inscribed property to include the entire Timbuktu Medina ; the development of an integrated conservation and sustainable and harmonious management project for the site, in the wider framework of development of the urban commune and in close cooperation with the elected members of the Territorial Communities of Timbuktu and the development partners ; the active conservation of the mausoleums.

---

### **Links**

- [Google Arts & Culture: Story - Rebuilding Timbuktu](#)
- [Google Arts & Culture: Story - Rebuilding and restoring Timbuktu](#)
- [🌐 View photos from OUR PLACE the World Heritage collection](#)

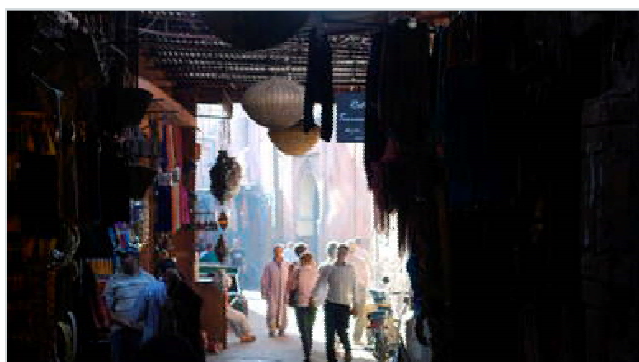
## Activities **6**



World Heritage Earthen Architecture Programme (WHEAP)

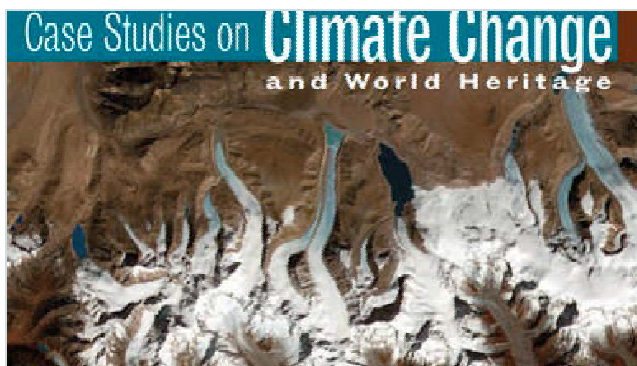


Rivers and Heritage: Niger-Loire, Governance and Culture project. Development of heritage and support for management of land and water resources, Mali



World Heritage Cities Programme





## Case Studies on Climate Change and World Heritage

More add

## News 40



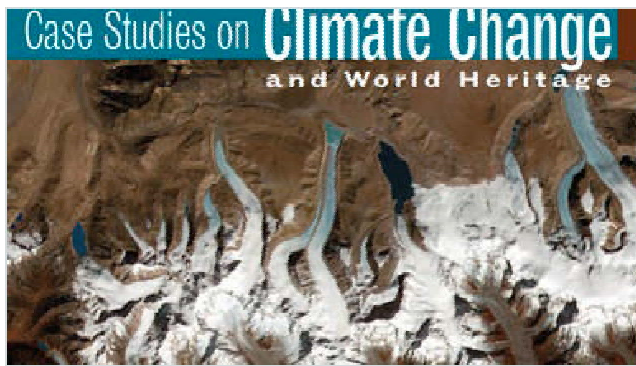
### Videos: Site managers report on Covid-19

26 October 2020



### 5 May 2017 – African World Heritage Day

2 May 2017



## Timbuktu Trial: "A major step towards peace and reconciliation in Mali"

27 September 2016

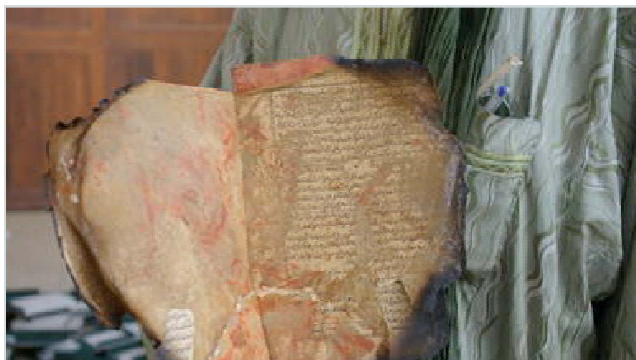


## UNESCO welcomes restoration of sacred gate of Sidi Yahia in Timbuktu

20 September 2016

More add

## Events 3



## Culture and Heritage in Danger: Education as a force for resistance



15 Sep 2015 - 15 Sep 2015

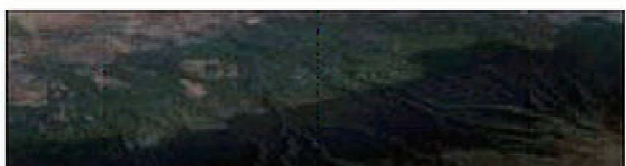


### International Conference on Ancient Manuscripts of Mali

28 Jan 2015 - 30 Jan 2015



Mt. Kilimanjaro, 1993 © NASA



### Climate Change and World Heritage: Expert Meeting

16 Mar 2006 - 17 Mar 2006

---

## Media

 [Timbuktu \(UNESCO/NHK\)](#)



**Mali**

**Date of Inscription:** 1988

**Criteria:** (ii)(iv)(v)

**Dossier:** 119rev

Circle and Region of Tombouctou  
N16 46 24 W2 59 58

## List of World Heritage in Danger

Inscription Year on the [List of World Heritage in Danger](#)

2012 - Present

1990 -2005



## State of Conservation (SOC)

by year

2023	2021	2019	2018	2017	2016	2015	2014	2013	2012
2011	2010	2009	2008	2007	2006	2005	2004	2003	1997

1995 1994 1990



---

### **Committee sessions**

Statutory Documents

Committee decisions

Extended 45<sup>th</sup> session (2023)

19<sup>th</sup> Extraordinary session  
(2023)

---

### **General Assembly**

24<sup>th</sup> GA UNESCO Paris  
(2023)

23<sup>rd</sup> GA UNESCO Paris  
(2021)

---

### **About World Heritage**

The Convention

Convention Text

Policy Compendium

Declaration of principles

Operational Guidelines

The Emblem

The States Parties

The Advisory Bodies

The Centre

Employment & Internships

Who's Who

---

## **The List**

World Heritage List

World Heritage in Danger

New Inscriptions

Criteria for Selection

Tentative Lists

World Heritage List  
Nominations

---

## **Reporting & Monitoring**

State of Conservation (SOC)

Periodic Reporting

Questionnaires 2018-2024

Questionnaires 2008-2015

Reactive Monitoring

Africa

Arab States

Asia & Pacific

Latin America and the  
Caribbean

Europe and North America

---

## Partnerships

[Become a Partner](#)

[What Partners Do](#)

[Our Partners](#)

---

## Activities

[All our activities](#)

[Volunteer](#)

---

## Publications

[World Heritage Review](#)

[Series](#)

[Resource Manuals](#)

[World Heritage wall map](#)

[More publications ...](#)

---

## Funding

[World Heritage Fund](#)

[International Assistance](#)

---

## More

[Contacts](#)

[Site Map](#)

[Become a member](#)

[Donate Now!](#)

---

## UNESCO

[UNESCO Latest News](#)



[Take Action](#)

[Ideas & Data](#)

[Our Impact](#)

[Our expertise](#)

[Core Data Portal](#)

[Subscribe to our Newsletter](#)

---

### **Terms of use**

[UNESCO Name & Logo](#)

[UNESCO FAQ](#)

[Report fraud, abuse,  
misconduct](#)

[Scam alert](#)

---

### **Policies**

[Protection of human rights  
\(Procedure 104\)](#)

[Access to Information](#)

[Website Privacy Notice](#)

[Events Privacy Notice](#)

[Data Protection and Privacy](#)

[Environmental and Social  
Policies](#)

---

### **Follow us**

[Facebook](#)

[Instagram](#)

[Twitter](#)

[Youtube](#)

[Linkedin](#)

[Syndication RSS](#)

---

© UNESCO World Heritage Centre 1992-2024